



## ➤ LIB: an initiative to built sharable AI tool for monitoring livestock behavior

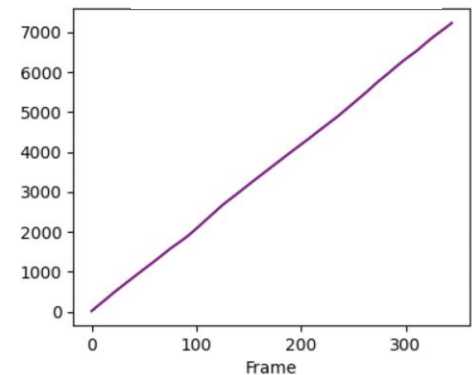
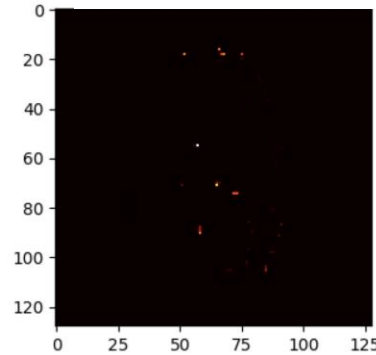
Mathieu Bonneau, Céline Coupechoux, Erwan Desterbecq

INRAE ASSET - UR143 - Petit-Bourg, Guadeloupe



4-June-25 / IA4AS Zurich / M. Bonneau

## Spatial distribution



Time at feed zone

- Body/Head
- Lying/Standing

- Postural time budget.
- Spatial distribution.
- Level of activity.
- Time in zone
- ...

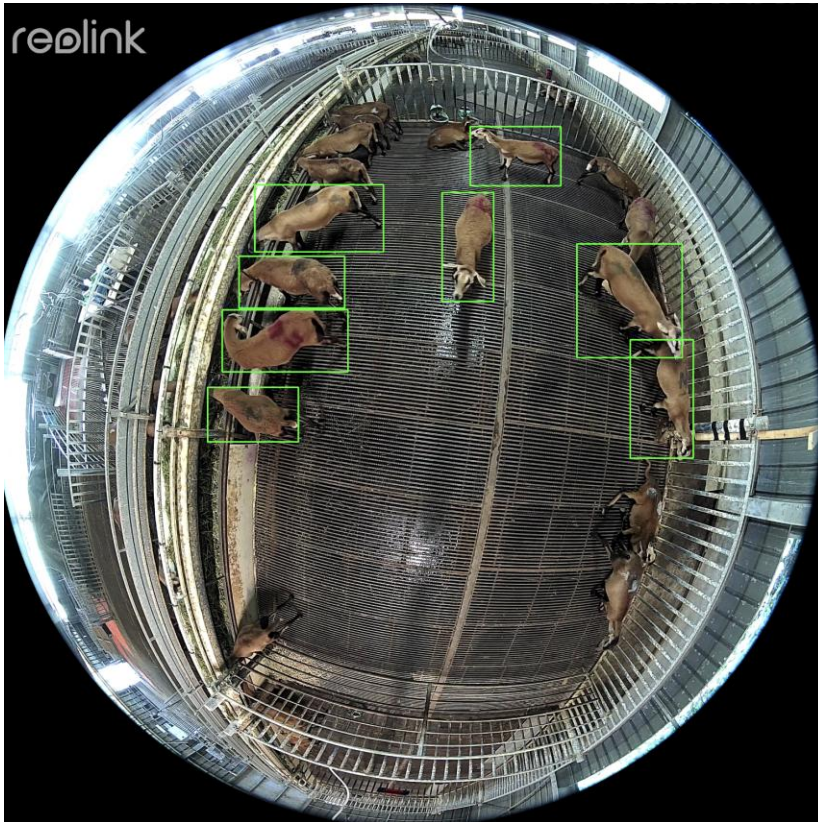
# ➤ Quantitative ethology



- Potential to:
  - Perform long term monitoring.
  - Measure a lot of different behaviors ...
  - With just one ~200€ camera.
- Use the recorded data to:
  - Derive health/welfare indicators.
  - Learn more about animal behavior.
  - PLF.
  - ...
- Grow interesting collaborations:
  - Ethologists, physiologists, genetics ...

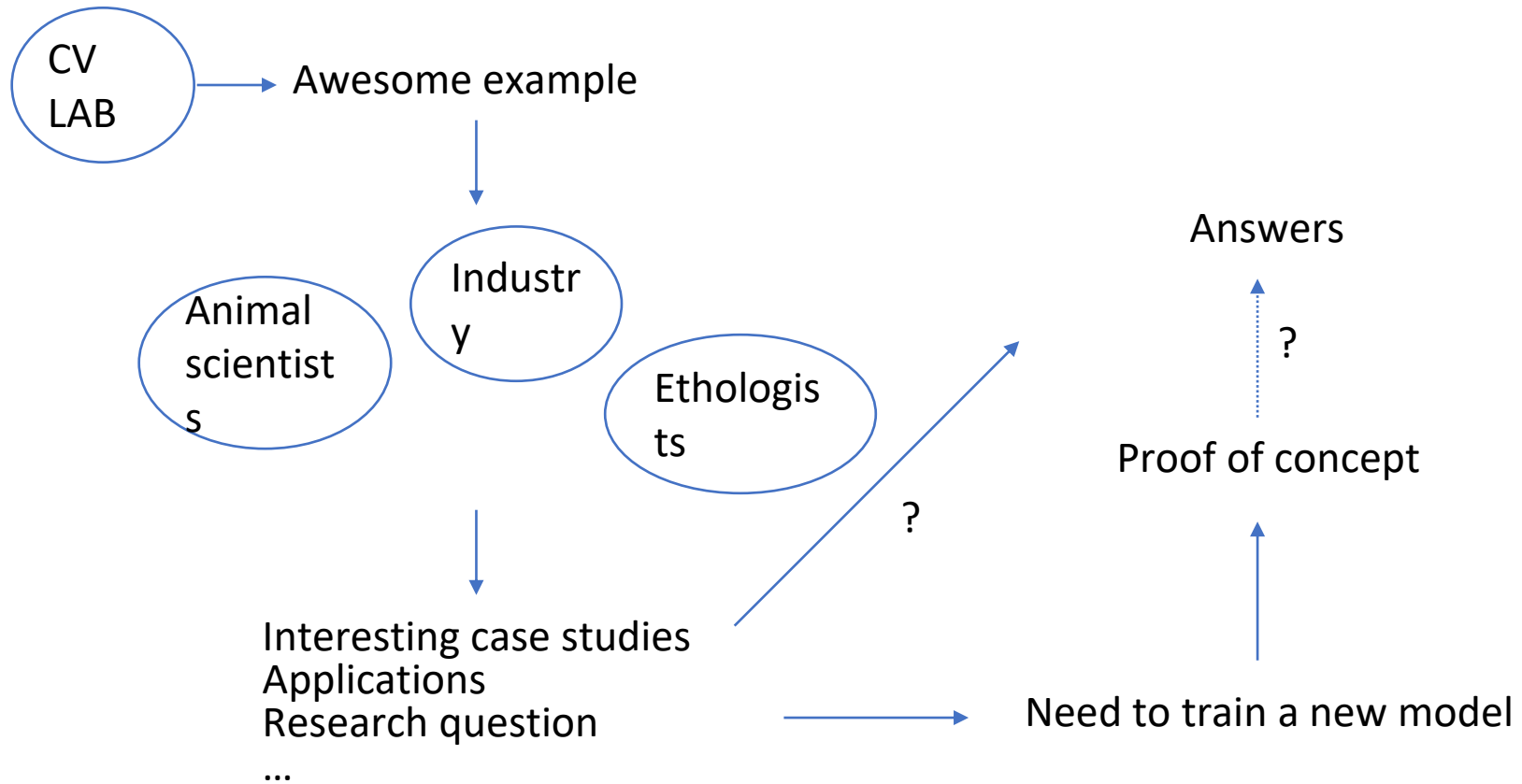


# ➤ Quantitative ethology or Annotation?

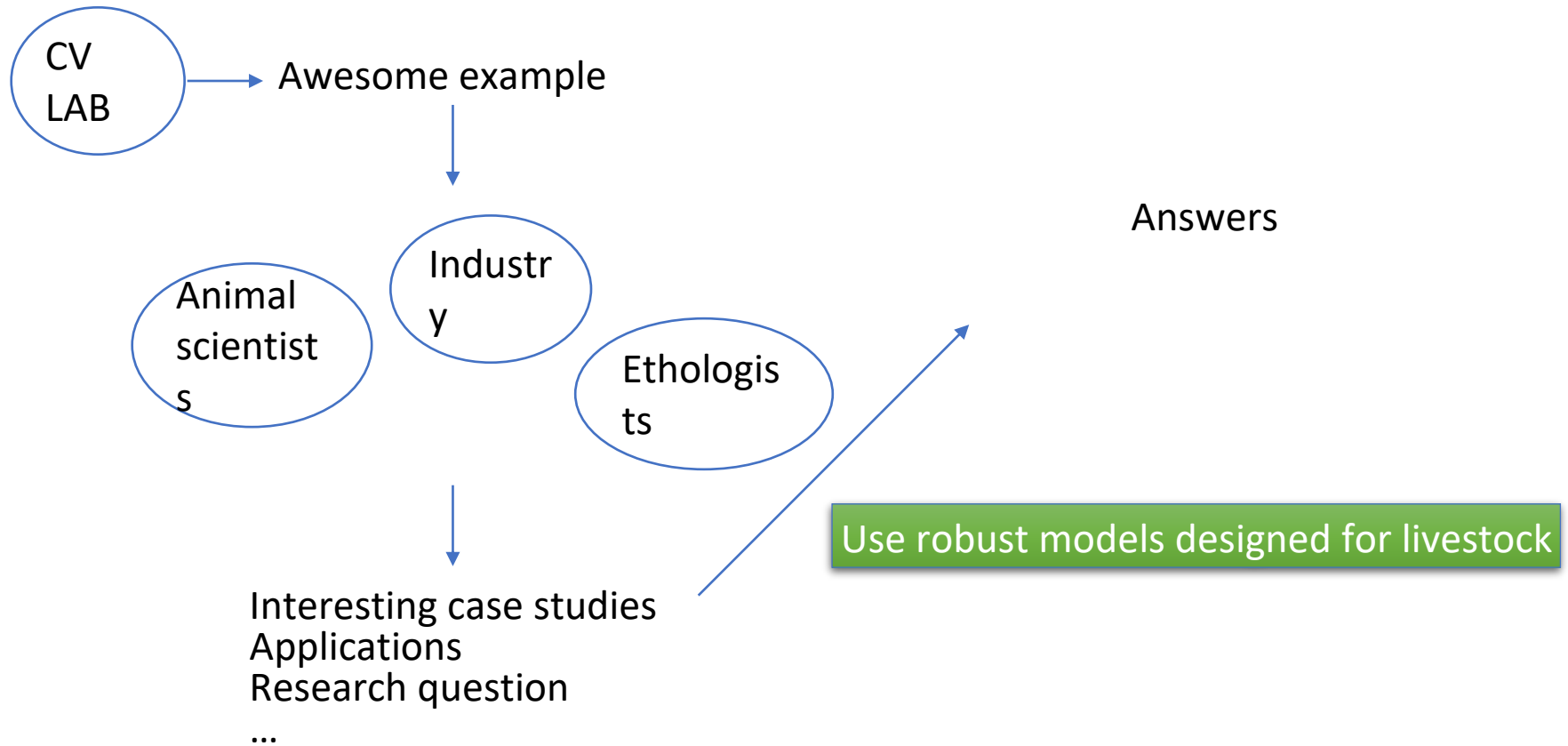


- New set-up (species, camera...):
  - Major loss of accuracy (nothing is working...).
- New project starts with:
  - Need to annotate images.
  - Who's gone do that?
  - How many images do we need?
  - On which computer do we train?
  - New behavioral variable.
- Expectation:
  - Use behavior data to answer a very interesting research question.
- Reality:
  - Image annotation.
  - Yolo training.
  - Yolo validation.
  - Few time for the research question ...

## ➤ Classic scheme

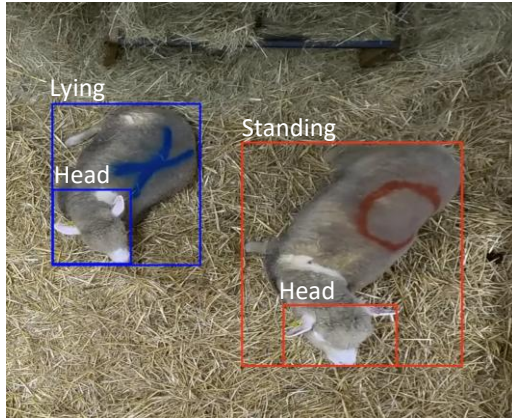


## ➤ Classic scheme



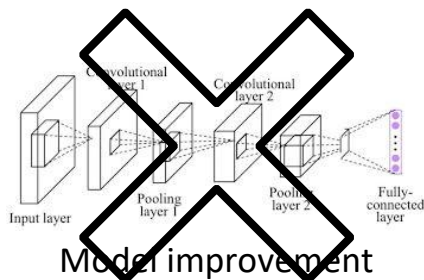
# ➤ LIB: Livestock Images Behavior

## What ?



- Objects detection:
  - Head.
  - Body with posture (Lying/Standing/Transition).
  - Human.
  - Piglets.
- Yolo model.
- Multi-Species (goats, sheep, cows, pigs, chickens).

## How ?

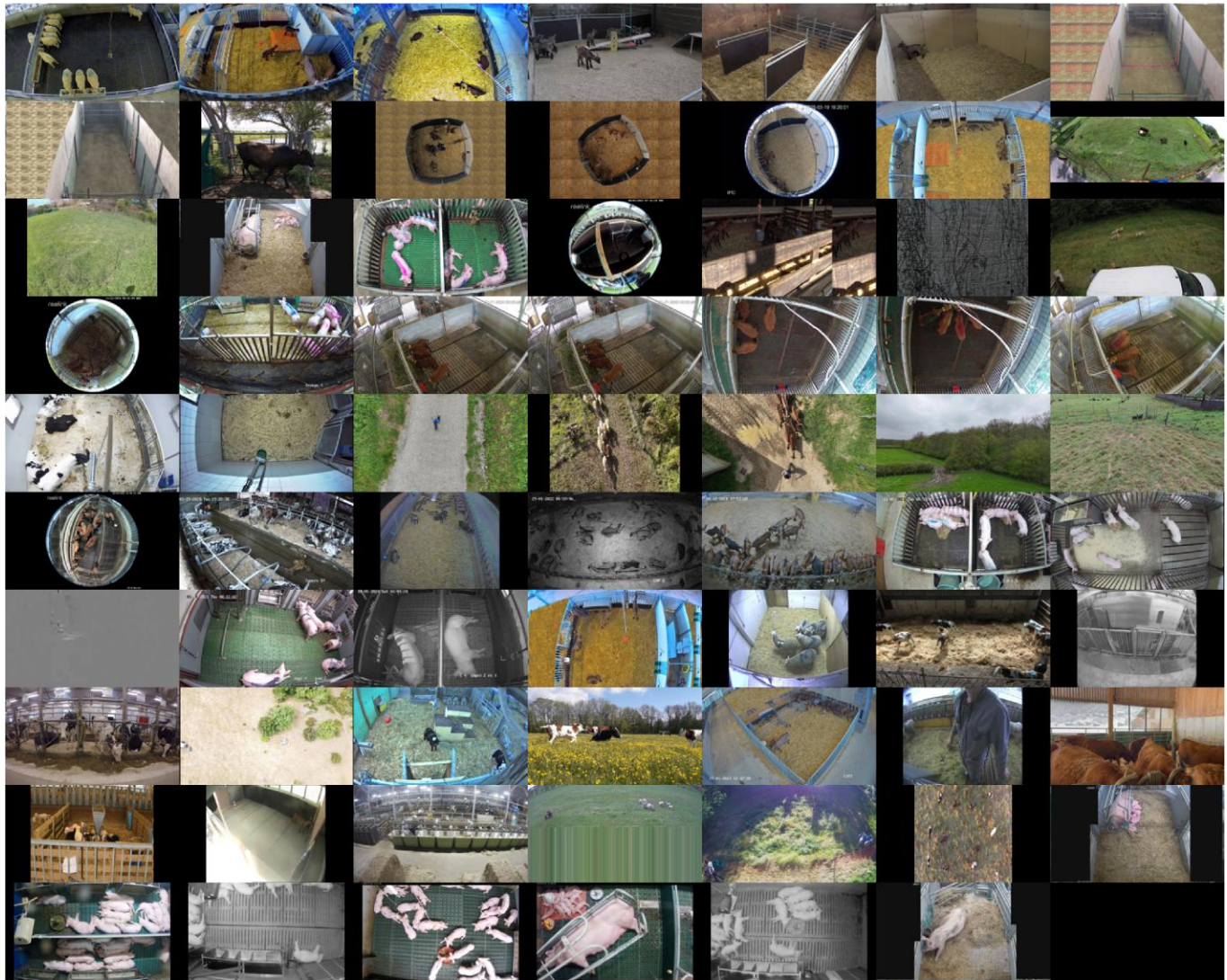


- Build an appropriate annotated dataset:
  - Diversity !
  - Accuracy !
- Hired two persons for annotation.
- Rely on collaboration with the scientific community.





## ➤ LIB so far

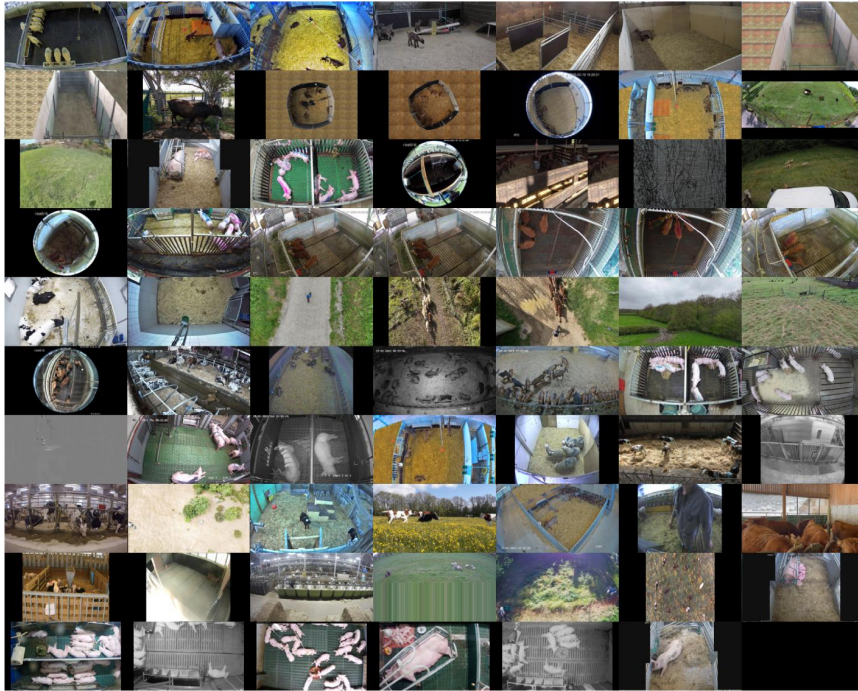


INRAE

LIB: Livestock Images Behavior  
4-June-25 / IA4AS Zurich / M. Bonneau



## ➤ LIB so far



- Almost 30,000 annotated images.
  - Mainly small ruminants and pigs.
  - Fewer contribution for cattle and chickens.
- One server for sharing images.
- Special care for images with humans.
- Images from researchers (mostly France).
- Images from public datasets:
  - COCO.
  - Robowflow.
  - Articles.



INRAE

LIB: Livestock Images Behavior

4-June-25 / IA4AS Zurich / M. Bonneau

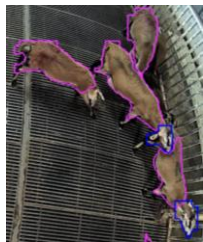
## ➤ LIB: Expected Outputs

- **Annotated BDD:**

- Publicly available.
- Yolo format.
- Associated data paper.
- Trained Yolo model.
- (Add segmentation.)

- **An encouraging example of open science?**

- Open the door to a new era of behavioral studies?
- Study fine behavior?
- Quantitative ethology (using mathematical models to study behavior).
- AI = data?



- **Want to contribute?**

- E-mail to [mathieu.bonneau@inrae.fr](mailto:mathieu.bonneau@inrae.fr)
- Project end August 2025 ...

