



2nd Artificial Intelligence for Animal Science Conference

**GHENT, BELGIUM
29 JUNE - 3 JULY 2026**

**PROGRAMME
EAAP 2026**

Table of Contents

Summary

<i>Welcome to the Artificial Intelligence 4 Animal Science Conference</i>	3
<i>Joint Organizers</i>	4
<i>Sponsors</i>	5
<i>Scientific programme</i>	7
<i>The European Federation of Animal Science (EAAP)</i>	14
<i>Industry Members Club</i>	15
<i>Ghent university / KU LEUVEN / ILVO</i>	16
<i>Organizers of the Artificial Intelligence 4 Animal Science Conference</i>	17
<i>About Campus Tweekerken</i>	18
<i>About Campus Coupure</i>	19
<i>City map with Ghent University campuses</i>	20
<i>Conference planning</i>	21
<i>Useful information</i>	24
<i>Information for participants</i>	33

Welcome to the Artificial Intelligence 4 Animal Science Conference

In recent years, artificial intelligence (AI) has demonstrated revolutionary potential in many sectors, and animal science is no exception. The organization of the second AI4animal science conference dedicated to this topic arises from the need to explore and leverage the opportunities offered by AI to improve efficiency, sustainability, and health and welfare in animal production. It is now well known that AI provides advanced tools to monitor and manage livestock farming activities more precisely and promptly. The analysis of data collected through sensors, IoT devices, and other technologies allows optimizing the nutrition, health, and welfare of animals, reducing waste and operational costs. One of the main challenges of modern agriculture is, to reduce environmental impact. AI can transform these challenges into opportunities through advanced data-analysis and decision support that minimize the use of natural resources and improve waste management, while simultaneously promoting more sustainable and environmentally friendly practices.

This 2-day conference, organized by EAAP, ILVO, KULeuven and Ghent university will offer a unique opportunity to showcase and discuss the newest developments in the field of AI for animal science. Through the scientific sessions, we aim to bring together researchers in AI for animal science, but also animal scientists, industry stakeholders and livestock sector partners with an interest in the future potential of AI in livestock farming. Focus will be on raising awareness of the importance and practical applications, but also challenges, of AI in animal husbandry. Through parallel scientific sessions and a plenary session, participants will be able to discuss and deepen their fundamental and applied knowledge and skills. It is well known that integrating AI into animal husbandry requires collaboration between different disciplines, including engineering, data science, computer science, biology, and, of course, animal husbandry. The Artificial-Intelligence-4-Animal-Science conference represents an ideal platform to facilitate the exchange of ideas and collaboration among experts from various fields, promoting an integrated and multidisciplinary approach.

In conclusion, the organization of the AI4animal science conference addresses the need to tackle current and future challenges in animal husbandry through the adoption of advanced technologies. AI has the potential to profoundly transform the sector, improving efficiency, sustainability, and animal welfare, and the workshop aims to be the starting point for this transformation.

Joint organizers



**GHENT
UNIVERSITY**

KU LEUVEN

ILVO

Flanders research institute for
agriculture, fisheries and food

Sponsors



AgrifoodTEF at ILVO is accelerating the adoption of trustworthy AI and robotics in agriculture and food systems. It provides companies—especially SMEs and startups—access to advanced testing infrastructure, expertise, and real-world validation environments. AgrifoodTEF focuses on bridging innovation and practice, supporting the development of sustainable, efficient, and data-driven solutions. By combining technical expertise with real-world validation, AgrifoodTEF helps de-risk development and accelerate time-to-market. **AgrifoodTEF is funded under the European Union’s Digital Europe Programme, Grant Agreement No. 101100622**



COST Action CA22112 - European Network on Livestock Phenomics (EU-LI-PHE)

Scientific programme

Monday 29 June

Session 1. Advancements in Data Collection, processing, standardization and integration

Chair: Norton, Niu

Session Type: Theme session

	Theatre Session 1	Book of Abstracts page
8:30	Case Study: Preparing Video Data for Behavioral Annotation, Visualization, and Machine Learning in Livestock Systems <i>D. Foy, T. Smith, J. Reynolds, J. Peralta</i>	19
8:45	Instance segmentation of pigs for automatic assessment of animal welfare related parameters during controlled atmosphere stunning <i>K. Zavyalova, J. Knöll, I. Wilk, H. Schomburg</i>	19
9:00	AI-Powered Voice Assistant for Routine Livestock Monitoring <i>M. Nourry, P. Marie, M. Querné, M. Marcon</i>	20
9:15	Role of environmental and signal parameters in stabilizing sniffer methane measurements in dairy cows. <i>R. Colleluori, G. Visentin, V. Indio, D. Cavallini, L. Zambianchi, F. Ghiaccio, M. Lamanna, L. Mammi, A. Formigoni</i>	20
9:30	DALM: an in-house developed mobile data acquisition and edge processing system <i>S. Coussement, M. Poelman, L. Ingelbrecht, J. Maselyne, P. J. De Temmerman</i>	21
9:45	Evaluation of ZELP Sense™ against Respiration Chambers for Methane Emissions Measurement in Cattle <i>S. Silvestri, R. Bica, M. Battelli, L. Rapetti</i>	21
10:00	Paired Computed Tomography and Standard X-ray Workflow for Artificial Intelligence-Assisted Post-Mortem Broiler Carcass Health Assessment <i>E. Kritsi, K. Libera, A. Bossers, L. A. M. Smit, L. Mughini-Gras, L. Heres</i>	22
10:15	Improved prediction of interaction with enrichment material in weaned fattening pigs using machine learning approaches <i>H. Taghvaifard, B. Han, F. Veldkamp, R. De Mol, I. C. De Jong, D. Schokker, M. J. Counotte</i>	22
10:30	Validating an accelerometer-based smart collar for automated behavioural monitoring in grazing dairy cattle – a new gold standard for research? <i>C. Ducrue, C. Allain, T. Dechaux, U. Jean-Louis, C. Littlejohn, Z. Guy</i>	23
10:45	ViT-Cow: Self-Supervised Video Pretraining for Few-Shot Dairy Cow Behavior Recognition <i>J. Allyndrée, M. Charles, M. Frere, D. Glaizal, M. Meier, C. Tibi, A. Madouasse, A. Cornuéjols, C. Martin</i>	23
11:00	Reconstructing representative daily Fourier transform mid-infrared milk spectra from partial milking robot samples using machine learning <i>C. Sneessens, S. Franceschini, P. E. Jacoby, E. Reding, J. Leblois, H. Soyeurt</i>	24
11:15	Federated Learning for Bovine Respiratory Disease Prediction Across European Veterinary Laboratories <i>S. Noor, J. Degroote, B. Pardon, G. Van Schaik, M. Hostens</i>	24
11:30	Application of GreenDA for GreenFeed® data processing and analysis: a bovine case study <i>S. Jeon, F. Picard, N. Baleret, Y. Gaudron, S. Fresco, R. Boré, B. Deroche, C. Martin</i>	25
11:45	European Network on Livestock Phenomics (EU-LI-PHE): integrating Artificial Intelligence and phenotyping data for Precision Livestock Farming and animal breeding <i>G. Schiavo, S. Bovo, J. Maselyne, T. Norton, L. Fontanesi, & Eu-Li-Phe Consortium</i>	25

Chair: Allain, Eerdeken
 Session Type: Theme session

Theatre Session 2		Book of Abstracts page
8:30	Application of Machine Learning to Predict Enteric Methane Emissions and Enhance Dairy Cattle Farm Management <i>A. Mansouri, D. Cavallini, R. Colleluori, G. Visentin, A. Formigoni, D. Remondini, A. De Cesare</i>	26
8:45	Tracking problematic behaviors of cage-free hens with machine vision technologies in the USA <i>L. Chai, R. Bist, X. Yang, S. Subedi, B. Paneru, A. Dhungana, S. Dahal</i>	26
9:00	Computer Vision-Based Multi-Feature Extraction and Regression for Precise Egg Weight Measurement in Laying Hen Farms <i>Y. Jiang</i>	27
9:15	Gait Analysis of Chickens: Predicting Expert Scores Using accelerometer Data <i>A. Eerdeken, C. Lopes Carvalho, G. Antonissen, F. Tuytens, E. De Poorter, D. Peralta, L. Martens, W. Joseph, M. Deruyck</i>	27
9:30	Towards quantitative behavioural indicators related to perinatal pig mortality <i>M. Perneel, P. J. De Temmerman, B. Garré, L. Ingelbrecht, D. Maes, M. Aluwé, J. Maselyne</i>	28
9:45	Automatic quantification of play behaviour in dairy calves from ultra-wideband location sensors and its associations with health <i>J. A. Vázquez-Diosdado, C. Doidge, E. Bushby, F. Occhiuto, J. Kaler</i>	28
10:00	Keypoint-Based Nest-Building Behaviour Detection in Sows Using Top-View Video Analysis <i>S. Malik, R. Sagevik, H. Quas, Ø. Nordbø</i>	29
10:15	Fiducial marker assisted animal tracking to quantify individual feeding time in group housed piglets <i>T. Van De Putte, R. Wang, S. Heirbaut, M. Hostens, J. Degroote</i>	29
10:30	Predictive Analytics in Dairy Farming: Machine Learning for Calving Outcome and Milk Yield Prediction <i>C. Bonenberger, L. Dale, E. Frenken, T. Kramer, R. Miller, C. Schmidt, M. Schneider</i>	30
10:45	Optimizing Dairy Cow Replacement Decisions Using Deep Reinforcement Learning in an Evolving Stochastic Environment <i>Y. Gong, L. Da Silva, V. Cabrera</i>	30
11:00	Prompting experience and image-transfer choices have limited impact on Gemini's recognition of the Equine Pain Face <i>D. B. Jensen, S. H. Knudsen, C. Lindegaard, K. Glerup, M. M. Gyldenkerne</i>	31
11:15	From Pasture to Prompt: Measuring LLM Effectiveness in Beef Cattle Outreach and Education <i>R. Strong, S. Talcott, S. Talcott, M. Hartel</i>	31
11:30	Dairylens: AI-enabled decision support for data driven decisions and time savings, life quality and reduced environmental footprint in dairy systems <i>M. Atzori, I. E. Cigagna, C. Mariani</i>	32
11:45	Holistic Animal Management with Agentic AI <i>A. Arsenos, O. Filippopoulos, N. Stavrou, A. Arsenou</i>	32

Chair: Degroote, Chai
 Session Type: Theme session

Theatre Session 3		Book of Abstracts page
13:30	AI-assisted Animal Welfare: potential and applications <i>J. L. Rault, P. Taylor</i>	33
13:45	Sensor prototype development for automated monitoring of integument damage of laying hens using suitable artificial intelligence models <i>A. Gruen, P. Bhattacharya, S. Rose, G. Bieber, H. Oz</i>	33
14:00	A Lightweight Acoustic Model for Panic Stress Recognition of Caged Laying Hens <i>Z. Wang, B. Chen, M. Di, Y. Jiang, S. He, H. Lin, J. Pan</i>	34
14:15	Technological Innovations in Automated Monitoring of Pig and Broiler Welfare at the Slaughterhouse: progress of the aWISH project <i>N. Van Noten, F. Tuytens, Awish Consortium, J. Maselyne</i>	34
14:30	Automated image analytics to reveal changes in drinking and eating behavior after vaccination <i>S. Van Poucke, J. Ceia, J. Defoort, J. Maselyne, P. J. De Temmerman</i>	35
14:45	Automated welfare monitoring through tear staining assessment in pigs at slaughter <i>S. Verlinde, A. Ramon-Perez, J. Reixach, S. Gol, P. Llonch Obiols, J. Maselyne, J. Verwaeren</i>	35
15:00	Long-term Sound Monitoring and Classification for Detecting Suspicious Events in Pig Farming <i>M. Wutke, H. Geffert, I. Reker, I. Traulsen</i>	36
15:15	Beyond Accuracy in Precision Livestock Farming: Distribution-Aware Evaluation for Large-Scale Poultry Weight Monitoring <i>G. Toth, M. Alexy</i>	36
15:30	Cleanliness evaluation of poultry carcasses using deep learning analysis of images <i>V. Belik, L. Buhre, C. Ruhland, D. Meemken, N. Langkabel</i>	37
15:45	Unlocking digital twins in dairy herd through dynamic stochastic modelling <i>K. K. Johansen, J. Ettema, S. Østergaard</i>	37
16:00	Machine Learning for Lactation Curve Forecasting: Predicting 305-Day Dairy Production from Partial Observations <i>J. Ganitzer, C. Egger-Danner, P. Roth</i>	38
16:15	User-Centered Explainable AI for Decision Support Systems in Dairy Farming <i>M. B. Girmay</i>	38
16:30	Robustness of derivative-based AI pipelines for inferring herbage consumption from milk FT-MIR indicator <i>K. Dichou, D. Veselko, A. Marvuglia, H. Soyeurt</i>	39
16:45	AI ready individual animal data collection for fattening pigs using transponder ear tags: practitioner expectations and implications for cross stage digital integration <i>J. Exler, V. Beck</i>	39

Chair: Pastell, Bovo
Session Type: Theme session

Theatre Session 4		Book of Abstracts page
13:30	Found in translation: building explainable model for transparent decision making and interdisciplinary communication in precision livestock farming <i>Y. Xue, L. Foldager, K. Thodberg, G. Gebreyesus</i>	40
13:45	Explainable Machine Learning with SHAP for SNP-Based Prediction of Robustness-Related Longevity Indicators in Angler Dairy Cows. <i>A. Seidel, K. Schröder, G. Thaller, N. Krattenmacher</i>	40
14:00	Reduced Labelling Effort with Generalisable Computer Vision Models for Pigs, Cattle, and Poultry <i>P. J. De Temmerman, J. Maselyne</i>	41
14:15	Testing synthetic data integration for automated fish detection on beam trawl vessels <i>H. De Rijcke, L. Snoeck, S. Delacauw</i>	41
14:30	Thinking outside the black box: rethinking the use of machine learning for automated behaviour analysis <i>S. P. Brouwers, N. McLaughlin</i>	42
14:45	A Deep Learning system for automating head direction annotation in ungulates <i>A. Kaki, J. Deutsch, S. Lebing, S. Döpjan, C. Nawroth</i>	42
15:00	Quantification of Fading in Melanin-based Operculum Spots as Stress Response in Atlantic Salmon using Computer Vision <i>T. Laique, M. Gunnes, Ø. Øverli, H. Ullah</i>	43
15:15	AI-driven exploration of molecular data in animal science: applications in genomics and metabolomics to dissect the animal phenome <i>S. Bovo, G. Schiavo, M. Bolner, F. Bertolini, L. Fontanesi</i>	43
15:30	Prediction of milk coagulation properties using prior-fitted transformers <i>T. J. Curik, D. Domović, N. Mikulec, B. Lukic, M. Spehar, I. Curik</i>	44
15:45	DairySleepNet: a multichannel state space architecture for dairy sleep classification <i>C. Guo, E. Ternman, K. Liu, M. Niu</i>	44
16:00	Artificial neural networks outperform partial least squares models for fatty acids estimation using FT-MIR spectrometry on bovine milk: a first step towards transfer learning on small ruminants. <i>E. Cabaroux, I. Alexakis, S. Franceschini, O. Christophe, C. Grelet, M. Calmels, C. Lecomte, C. Bertozzi, D. Veselko, F. Dehareng, H. Soyeurt</i>	45
16:15	Development of robust neural network architectures for federated FT-MIR prediction of enteric methane emissions in dairy cows <i>H. Soyeurt, F. Dehareng, N. Gengler, S. Mcparland, M. Kreuzer, M. Bell, P. Lund, C. Martin, B. Kuhla, A. Vanlierde</i>	45
16:30	Fitting and Predicting Dairy Lactation Curves based on Test-Day Records <i>C. Frauzino, S. Canuto, V. Cabrera, E. Noronha</i>	46
16:45	LivestockMind: A Large Language Model for Livestock Health Caring <i>Z. Guo, L. Lyu, Z. He, K. Liu</i>	46

Poster Session A

17:30-18:30 Outdoor terraces

Poster Session A		Book of Abstracts page
09.01	Overcoming Data Silos in Bovine Reproduction: The Minimum Information Model for Bull Fertility Data (MI-BFD) for Data-Driven, Multi-Center AI Applications <i>A. Abu Dayeh, E. Kutafina, O. Beyan</i>	60
09.02	SENSTAR: Advancing Sensor-Based Indicators and Modeling of Animal Resilience, Health, and Welfare in Precision Livestock Farming <i>D. Foy, J. . Gautier, B. Foris, C. Morgan-Davis, L. Dale, P. P. Nielson, G. Franchi, X. Díaz De Otálora</i>	61

09.03	GLOBAL: a 10-year experiment to describe lifetime health in dairy cows <i>N. Gafsi</i>	61
09.04	Digital twin for fattening pig growth and behaviour <i>J. Sloomans, T. Norton, J. Maselyne</i>	62
09.05	AgriScienceFM: Foundation Models for Biological, Environmental and Management Data <i>P. J. De Temmerman, J. Maselyne, I. Athanasiadis</i>	62
09.06	Integrating AI-Driven Bioacoustics and Affective Neuroscience for Objective Sheep Welfare Assessment: A Methodological Framework <i>E. Emsen, B. Ödevci, M. Kutluca Korkmaz, N. Küçükay</i>	63
09.07	Smart herds: AI in feeding, monitoring, and welfare of dairy cattle <i>J. Fabjanowska, E. Kowalczyk-Vasilev, S. Milewski, G. Rogowska, R. Klebaniuk</i>	63
09.08	An LLM-Powered Intelligent Agent for Early Disease Diagnosis in Dairy Cattle using a Domain-Specific Knowledge Graphs <i>Z. Yang, Y. Yang, K. Sima, M. Li</i>	64
09.09	Machine learning-based genomic prediction of feed conversion ratio using SNP markers in Latvian sheep breeding. <i>M. Martins, N. Paramonova, S. Plavina, D. Malakovska, N. Krasnevskā, J. Paramonovs, D. Kairisa, I. Trapina</i>	64
09.10	Artificial intelligence in precision poultry feeding: data integration, predictive models, and applications in production <i>S. Milewski, J. Fabjanowska, G. Rogowska, E. Kowalczyk-Vasilev, B. Kiczorowska</i>	65
09.11	Proof-of-Concept: AI-Based Classification of Cow Behavioral Responses using Neck-Mounted Accelerometers in Pasture <i>I. A. Saeed, K. Stetter, M. S. Teitscheid, A. M. Kurz, J. Langbein, S. Rose</i>	65
09.12	Automatic monitoring of piling behaviour in laying hens using convolutional neural networks <i>M. M. Gyldenkerne, D. B. Jensen</i>	66
09.13	Benchmarking Multiple Piglet Tracking and Detection in Crowded Farrowing Pens <i>J. Gao, I. Kyriazakis, S. P. Brouwers, X. Yang, D. Morris, M. Benjamin, N. Mclaughlin</i>	66
09.14	Eco-Catch: AI-Driven Monitoring and Reduction of Protected Species Bycatch in European Waters <i>L. Ingelbrecht, P. J. De Temmerman, J. Maselyne, H. De Rijcke, S. Delacauw</i>	67

Tuesday 30 June

Session 5.

Plenary Session

Chair: Maselyne, Pastell
Session Type: Plenary session

	Theatre Session 5	Book of Abstracts page
9:00	Invited AI Foundation models for agricultural sciences - Challenges and opportunities <i>I. Athanasiadis</i>	47
9:30	Invited Bridging Fragmented Agricultural Data with AI-Driven Semantic Translation <i>P. Hekmati, K. Reed, J. Waddell, V. Cabrera</i>	47
10:00	Applications of AI in animal feeding and management <i>A. Bach</i>	48
10:30	From Pixels to Insight: Challenges and opportunities for computer vision in animal monitoring <i>S. Leroux</i>	48

Poster Session B

13:30-14:30 Outdoor terraces

	Poster Session B	Book of Abstracts page
10.01	Future-Proofing Agricultural Research for the Era of Artificial Intelligence <i>Y. Gong, C. Qian, H. Hu, Y. Jung, A. N. Negreiro, M. Wiedmann, V. E. Cabrera</i>	67
10.02	Artificial Intelligence–driven modelling of microclimatic and climatic effects on production, metabolic status, udder health and ammonia emission in dairy cows <i>K. Kuterovac, V. Gantner</i>	68
10.03	Automated Deep Learning–Based Quantification of Goblet Cells as a Digital Biomarker of Poultry Gut Health <i>D. Mezghiche, F. Diaz Bahamonde, C. Vidal Moreno De Vega, G. Antonissen, P. Claes</i>	68
10.04	Mentor::: AI-Powered, Secure Bioinformatics for Rapid Animal Health Discovery <i>D. Schokker, V. Bianchi</i>	69
10.05	Forecasting of Ammonia Concentrations in Commercial Growing Pig Houses Based on Deep Learning Models <i>D. A. Méndez Reyes, M. Jarque, S. Calvet Sanz</i>	69
10.06	From trait prediction to system-level inference: a machine learning framework for intrinsic product quality investigation <i>A. Mouhanna, L. Rey-Cadilhac, L. Darrigade, B. Martin, S. De Smet</i>	70
10.07	Data-Driven Genomic Analysis of Population Structure and Breed Differentiation of Latvian Dark-head Sheep. <i>I. Trapina, M. Martins, S. Plavina, D. Malakovska, N. Krasnevska, J. Paramonovs, D. Kairisa, N. Paramonova</i>	70
10.08	Whole-Chamber AI-Based Enumeration of Eimeria Oocysts for Objective OPG Quantification <i>D. Mezghiche, M. Verstraete, C. Vidal Moreno De Vega, G. Antonissen, P. Claes</i>	71
10.09	Prediction of Post-Freezing Semen Quality Using Pre-Freezing Semen Quality <i>A. Rehman, A. Tresch, K. Kupisiewicz</i>	71
10.10	Deep-learning inference models for canine diffuse large B cell lymphoma <i>K. Ancheta, A. Psifidi, S. Le Calvez, A. Yale, J. Williams</i>	72
10.11	Visual Re-Identification via Collar Patterns for Identity Recovery in Multi-Goat Tracking Systems <i>D. A. Méndez Reyes, D. Liu, T. Norton, S. Calvet Sanz, A. Costantino</i>	72
10.12	Multi-omics integration reveals coordinated rumen hydrogen turnover and energy metabolism underlying feed efficiency in Angus cattle <i>A. Nunes, C. Faleiros, M. Poleti, G. Marcelli, J. B. Ferraz, H. Fukumasu</i>	73
10.13	AI-Enabled Bioelectrical Impedance Digital Biomarkers for Non-Invasive Detection of Caseous Lymphadenitis in Goats <i>A. Klingler, A. Siddique, R. Kota, A. Rubio-Villa, D. Brown, P. Batchu, J. Van Wyk, T. Terrill</i>	73
10.14	AI-Enabled Radiofrequency Digital Biomarkers for Non-Invasive Anemia Phenotyping in Goats <i>S. R. Neelagiri, A. Siddique, D. Brown, Z. Carlton, J. Van Wyk, T. Terrill</i>	74
10.15	Validation of an automated AI image analysis system for in-line green ham quality assessment <i>V. Bonfatti, A. Rosolen, K. Ivanov, N. Guzzo, S. Faggion, P. Carnier</i>	74
10.16	Predictive modeling of bacteriophages endolysins structural features as a decision-support framework for targeting rumen microorganisms <i>C. Faleiros, A. Nunes, O. Gonçalves, M. Poleti, H. Fukumasu</i>	75

Chair: Cabrera, Noronha
 Session Type: Theme session

Theatre Session 6		Book of Abstracts page
14:30	Big Data and Machine Learning to Improve Culling Decision-Making in Dairy Herds <i>L. Da Silva, Y. Gong, V. Cabrera</i>	49
14:45	Multi-object tracking benchmark for livestock <i>H. Fred, D. Liu, P. De La Vallée, L. Ruotsalainen, M. Pastell, T. Norton</i>	49
15:00	Bridging Animal Science and Human Nutrition through INSIGHT: A Retrieved-Augmented Agentic Model <i>R. Strong, L. Tedeschi, K. Kaniyamattam, J. Tao, D. Mudireddy, P. Surabhi, N. Greer, A. Wang</i>	50
15:15	Using AI to find veterinary data sources in Europe <i>R. Petie, V. Bianchi, E. Pacholewicz</i>	50
15:30	FacEDiM++: A Probabilistic Evaluation Framework for Few-Shot Cross-Species Face Verification <i>D. Lukamba Nsadisa, S. Mwasimuke Tsongo, B. Twite Ndeze, R. Vaishampayan, M. C. Oveneke, J. Ambukiyenyi Onya</i>	51
15:45	Drone-Based AI System for Automated Sheep Counting Using Detection and Tracking Models <i>L. Helary, A. Lebreton, A. Lauront, E. Nicolas, T. Dechaux</i>	51

Session 7.

Advancing Digital Biomarkers and Phenotypes with AI

Chair: Liu, Heirbaut
 Session Type: Theme session

Theatre Session 7		Book of Abstracts page
14:30	Image-derived digital similarity matrices as a scalable proxy for pedigree and genomic relationship matrices <i>M. Billah, M. Bermann, C. Y. Chen, B. Valente, E. Psota, J. Holl, S. M. Bhandarkar, I. Misztal, D. Lourenco</i>	52
14:45	Thermal Signatures as Biomarkers of Podal Inflammation in Cattle and Ovine <i>L. Helary, Y. Do, J. Manceau, V. Gauthier, M. Doucet, A. Duvauchelle Waché</i>	52
15:00	Automatic recognition of herbage prehensions in grazing ewes <i>S. Bognanno, R. Avanzato, L. Beritelli, F. Beritelli, F. Gimmillaro, M. Avondo</i>	53
15:15	Artificial intelligence–driven plasma metabolomics identifies metabolic signatures of feed efficiency in beef cattle <i>A. Nunes, C. Faleiros, M. Poleti, Y. López-Hernández, D. Wishart, H. Fukumasu</i>	53
15:30	Non-invasive eye temperature monitoring in dairy calves using computer vision and infrared technology <i>J. A. Vazquez Diosdado, F. Occhiuto, M. Thomas, J. Kaler</i>	54
15:45	Evaluating standing and lying behaviors measured with collar-mounted accelerometers for lameness detection in dairy cows <i>J. Allyndrée, C. Harrouet, A. Cornuéjols, C. Martin, A. Madouasse</i>	54
16:00	Zero-shot computer vision analysis of social behaviour in group-housed sows <i>N. Ipek, J. Verwaeren, B. De Baets, F. A. M. Tuytens</i>	55
16:15	AI-Driven Temporal Behavioral Pattern Mining for Digital Health Monitoring in Livestock <i>T. Terrill, A. Siddique, S. Panda, A. Mahapatra, E. Morgan, J. Van Wyk</i>	55
16:30	Validation of computer vision for automated detection of pig movement during Open Field and Novel Object tests <i>T. Ede, M. Parada Sarmiento, L. Sabei, T. Parsons</i>	56
16:45	2D to 3D Pose modeling: A scalable framework for individualized detection of tail-biting interactions in group-housed pigs <i>K. Ivanov, V. Bonfatti, C. Kasper, H. R. Nasser</i>	56
17:00	Vision-based detection of pain and nest-building behaviors in sows within commercial farrowing pens <i>P. Helf, M. Oczak</i>	57

Chair: Giersberg, Liu
 Session Type: Theme session

	Theatre Session 8	Book of Abstracts page
16:30	Support for whom? – Proposing an alternative approach to digital technologies in animal science <i>M. F. Giersberg, F. L. B. Meijboom</i>	57
16:45	Using AI to optimise animal welfare:opportunities and ethical challenges <i>M. Campbell</i>	58
17:00	Modelling Fish Welfare Law using Artificial Intelligence <i>L. Northwood</i>	58
17:15	Ethical and practical trade-offs in AI- and sensor-based disease detection in dairy cattle <i>J. Roelofs, A. Van Kneegsel</i>	59
17:30	Virtual herding for real animals: healthy farming craftsmanship in a data-rich environment <i>F. L. B. Meijboom, M. Admiraal</i>	59
17:45	A proof-of-concept framework for machine learning to link coccidiosis-related performance losses to changes in the carbon footprint <i>J. Gickel, C. Visscher</i>	60

The European Federation of Animal Science - EAAP

The main aims of the EAAP are to promote, by means of active co-operation between its members and other relevant international and national organizations, the advancement of scientific research, sustainable development and production systems; experimentation, application and extension; to improve the technical and economic conditions of the livestock sector; to promote the welfare of farm animals and the conservation of the rural environment; to control and optimize the use of natural resources in general and animal genetic resources in particular; to encourage the involvement of young scientists and technicians. More information on the organization and its activities can be found at www.eaap.org.

Former Presidents

1949-1961	A.M. Leroy (France)
1961-1967	R. Trehane (United Kingdom)
1967-1972	J.M. Rijssenbeek (The Netherlands)
1972-1978	J.H. Weniger (Germany)
1978-1984	E.P. Cunningham (Ireland)
1984-1990	A. Roos (Sweden)
1990-1996	A. Nardone (Italy)
1996-2000	P. Solms-Lich (Germany)
2000-2004	A. Aumaitre (France)
2004-2008	J. Flanagan (Ireland)
2008-2012	K. Sejrsen (Denmark)
2012-2016	P. Chemineau (France)
2016-2020	M. Gauly (Germany)
2020-2024	I. Casasús (Spain)

Council members

President

- Jöel Bérard (Switzerland)

Vice-Presidents

- Sam De Campeneere (Belgium)
- Gunnfríður Elín Hreiðarsdóttir (Iceland)

Council Members

- Peer Berg (Norway)
- Christian Lambertz (Germany)
- Nicolaj Ingemann Nielsen (Denmark)
- Moschos Korasidis (Greece)
- Nicolò Macciotta (Italy)
- Klemen Potocnik (Slovenia)
- Diana Ruska (Latvia)

FAO Representative

- Badi Besbes

Auditors

- Georgia Hadjipavlou (Cyprus)
- Zygmunt Maciej Kowalski (Poland)

Alternate Auditor

- Jeanne Bormann (Luxembourg)

Secretary General

- Andrea Rosati

The European Federation of Animal Science (EAAP) has close established links with its sister organizations of American Society of Animal Science (ASAS), American Dairy Science Association (ADSA), Canadian Society of Animal Science (CSAS) and Asociación Latinoamericana de Producción Animal (ALPA) and is also member of the World Association for Animal Production (WAAP).



Industry Members Club



EAAP started in 2023 a new initiative to create closer connections between European livestock industries and the animal science network. Therefore, the “EAAP Industry Club” was shaped with the specific aim of bringing together the important industries of the livestock sector with our European Federation of Animal Sciences. All companies dealing with animal production (nutrition, genetic, applied technologies, etc.) are invited to join the “EAAP Industry Club” because industries will have opportunity to increase their visibility, to be actively involved in European animal science activities, and to receive news and services necessary to industries. In addition, through the Club, industries will enlarge their scientific network and will receive specific discounts on sponsoring activities. The Industries that already joined the “EAAP Industry Club” are:

 illumina®

 C-LOCK
Monitor, Measure, Improve

 NEOGEN®

 VETAGRO®
LIKE NO ONE ELSE®

 Alltech®

 MSD
Animal Health

 Dairy Experts
Research Solutions (CRO)

 dox-a

 CJ BIO

 progenus SMART DNA PARTNER

 Elanco™

 INALCA®

 nutreco
an SHV company

 VHLGenetics®
DNA is our core

 NOVUS®

 ED&F MAN
EST. 1783
Liquid Products

The Club gives:

Visibility • Company name and logo at EAAP website and all relevant documents • Slides with name and logo at Official Events • Priority links with EAAP Socials • Invite, through EAAP dissemination tools and socials, people to events organized by your company • Information disseminated through a brand new Industry Newsletter • Networking • Joining the Study Commissions and Working Groups • Suggest topics to be considered for Annual Meetings Scientific Sessions • Organize Professional Panel through the EAAP platforms • One free registration to each Annual Meeting and at every meeting organized by EAAP • Five individual memberships at no cost • Many possible discounts (~30%) to sponsor and to increase company visibility through: EAAP Newsletter, EAAP website, EAAP Annual Meetings and workshops • Support young scientist by sponsoring scholarships named by the company • Co-Organize and sponsor webinars

Make yourself more visible within the livestock industry via the animal science network!

For more information please contact eaap@eaap.org

Ghent university

Ghent University is a top 100 university, founded in 1817, and one of the major universities in Belgium with more than 50,000 students and 15,700 employees. Our 11 faculties offer more than 200 programs and conduct in-depth research within a wide range of scientific domains. Our credo is 'Dare to Think', challenging everyone to question conventional views and to dare to take a nuanced stand. We are a pluralistic university open to all, regardless of their ideological, political, cultural or social background. Ghent University Global Campus is also the first European university in Songdo, South Korea.

Ghent University's Faculty of Bioscience Engineering works in applied biological and life sciences, with education and research connected to a broad range of bioscience engineering domains. Its history goes back to 1920, when the first academic year at the State Agricultural University was opened, and in 1969 it officially became a faculty within Ghent University. The faculty departments focus on animal sciences and aquatic ecology, plants and crops, food technology, safety and health, green chemistry and technology, biotechnology, data analysis and mathematical modelling, environment, and agricultural economics. Within the Department of Animal Sciences and Aquatic Ecology, the LANUPRO research group focuses on feed evaluation and animal product quality, with significant efforts on modelling digestion processes in pigs, poultry and ruminants, and data-driven animal nutrition solutions.

KU LEUVEN

KU Leuven is one of Europe's leading research-intensive universities. Founded in 1425, it is among the oldest universities in Europe and today combines academic excellence with strong international and industrial collaboration. Across its faculties, KU Leuven conducts fundamental and applied research in the life sciences, engineering and data science, with a long-standing focus on translating innovation into solutions for society. Animal science and the sustainable transformation of the agri-food sector are addressed in particular through the Faculty of Bioscience Engineering and its Department of Biosystems, where biological, technical and digital expertise are brought together.

Within the Department of Biosystems, the M3-BIORES (Measure, Model & Manage Bioresponses) research group of the Division of Animal and Human Health Engineering specializes in Precision Livestock Farming and the application of artificial intelligence to animal monitoring. The group develops sensor-, vision- and audio-based systems combined with machine learning to continuously assess animal health, behavior and welfare in real time. Through close collaboration with farmers, industry partners and international research consortia, M3-BIORES contributes to translating AI-driven technologies into practical, on-farm decision support tools that promote efficient, sustainable and welfare-oriented livestock production.

ILVO

Flanders Research Institute for Agriculture, Fisheries and Food (ILVO) is a Belgian research organization dedicated to agriculture, fisheries, and food systems. It conducts applied and interdisciplinary research to support sustainable, innovative, and economically viable food production.

ILVO works closely with farmers, industry, policymakers, and researchers to develop practical solutions for real-world challenges such as climate change, animal welfare, food quality, and environmental impact. By combining scientific expertise with collaboration across the agri-food chain, ILVO aims to strengthen the transition toward resilient and sustainable food systems in Flanders and beyond.

Organizers of the Artificial Intelligence 4 Animal Science Conference

Scientific Committee

- Matti Pastell - LUKE
- Jeroen Degroote - Ghent University
- Tomas Norton - KU Leuven
- Jarissa Maselyne - ILVO
- Mutian Niu - ETH Zurich
- Victor Cabrera - UW-Madison
- Mona Giersberg - Utrecht University
- Kai Liu - City University of Hong Kong
- Clément Allain - IDELE

Organizing Committee

- Matti Pastell - LUKE
- Jeroen Degroote - Ghent University
- Tomas Norton - KU Leuven
- Jarissa Maselyne - ILVO
- Mutian Niu - ETH Zurich
- Riccardo Carelli - EAAP
- Andrea Rosati - EAAP

About Campus Tweekerken

Campus Tweekerken is one of the many campuses of Ghent University and is located in the historic city centre of Ghent, in the **direct proximity of the Saint-Peters square**. Due to its central location, Campus Tweekerken is part of UGent's city-centre campus cluster, together with other nearby campuses such as Aula and Boekentoren.

The campus is part of the [Faculty of Economics and Business Administration](#), where education and research activities in economics, business administration, and management are organized. Campus Tweekerken consists of **several buildings**, including the **Hoveniersberg**, Tweekerken building and the buildings at Sint-Pietersplein. These facilities include lecture halls, classrooms, faculty services, and study spaces for students.

The AI4AS conference with its scientific program on June 29th and 30th will be organized at Campus Tweekerken, Building Hoveniersberg.

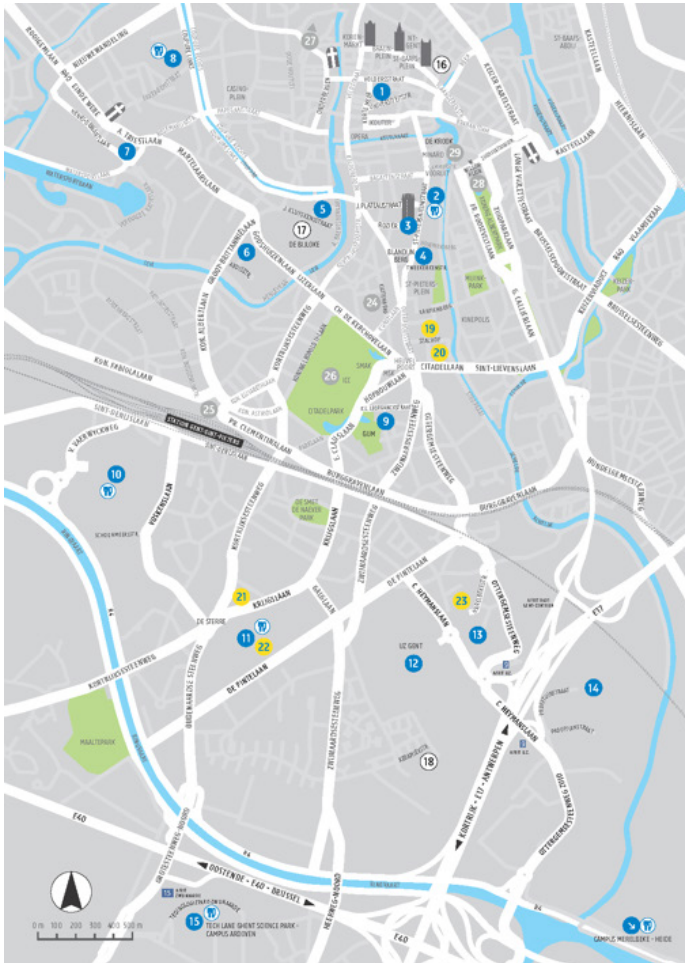


About Campus Coupure



Campus Coupure is the main campus of Ghent University's [Faculty of Bioscience Engineering](#) and is located at Coupure Links 653, along the Coupure canal in the city center of Ghent. Building A is one of the central teaching buildings on the campus. **The summer school workshops on July 2nd and 3th will be organized at Campus Coupure, Building A.**

City map with Ghent University campuses



STADSPLAN GENT



CAMPUSSEN

- | | |
|--|-----------------------------|
| 1 Campus Aula (Aula) | Universiteitsstraat 4 |
| 2 Campus Ufo (Ufo, Rectoraat, De Brug) | Sint-Pietersnieuwstraat 33 |
| 3 Campus Boekenoren (Universiteitsbibliotheek) | Rozier 9 |
| 4 Campus Tweekerken (Therminal) | Tweekerkenstraat 2 |
| 5 Campus Rommelzaere | Jozef Kluyckensstraat 29 |
| 6 Campus Mercator | Abdisstraat 1 |
| 7 Campus Dunant (GUSB) | Henri Dunantlaan 2 |
| 8 Campus Coupure | Coupure Links 655 |
| 9 Campus Ledeganck (GUM en Plantentuin) | K. L. Ledeganckstraat 35 |
| 10 Campus Schoonmeersen | Valentin Vaerwyckweg 1 |
| 11 Campus Sterre (UGent kringloopwinkel) | Krijgsiaan 281 |
| 12 Campus UZ Gent | Cornel Heymanslaan 10 |
| 13 Campus Heymans | Ottergemsesteenweg 460 |
| 14 Campus Proeftuin | Proeftuinstraat 86 |
| 15 Tech Lane Ghent Science Park – Campus Ardoyen | Technologiepark Zwijsnaarde |

RESTO'S EN CAFETERIA'S

- | | |
|----------------------------|---------------------------|
| W Campus met resto | |
| C Campus met cafeteria | |
| 16 HoGent Resto De Wijnart | Geraard de Duvelstraat 5 |
| 17 HoGent Resto Bijloke | Louis Pasteurlaan 2, Gent |
| 18 HoGent Resto Vesalius | Keramiekstraat 80 |

HOMES

- | | |
|--|-----------------------|
| 19 Homes Groningen, Uppsala, Göttingen, Canterbury | Stalhof |
| 20 Homes Fabiola, Vermeulen, Heymans | Stalhof, Isabellaakal |
| 21 Home Astrid | Krijgsiaan 250 |
| 22 Home Bertha De Vriese | De Pintelaan 2608 |
| 23 Home Boudewijn | Harelbekestraat 70 |

OPENBARE EN STADSDIENSTEN

- | | |
|---|----------------------------------|
| 24 De Fietsambassade: verhuur en herstel | Kattenberg 2 |
| 25 Station Gent-Sint-Pieters | Koningin Maria Hendrikaplein 1 |
| 26 ICC (International Convention Center) | Familie van Rysselbergheedreef 2 |
| 27 Stad Gent – Dienst Toerisme (Oude Vismijn) | Sint-Veerleplein 5 |
| 28 Stad Gent – Administratief Centrum Zuid | Woodrow Wilsonplein 1 |
| 29 De Krook – Stadsbibliotheek | Miriam Makebaplein 1 |

Campus Tweekerken is located at **number 4** and will be the venue to host the AI4AS conference on June 29th and 30th. The **Saint-Peters square** is located **directly next to campus Tweekerken** and will be the gathering/drop-off point for the technical tour to ILVO on July 1st. **Campus Coupure** is located at **number 8** and will be the venue to host the AI4AS summer school workshops on July 2nd and 3th.

The map can be found online using this [link](#).

Conference planning

29 June 2026	SCIENTIFIC PROGRAM			
TIME	ROOM	ACTIVITY	ROOM	ACTIVITY
8:00 – 8:30	On the ground floor, near outdoor terraces	Registration		
8:25 – 8:30	Auditorium D - André Devreker	Registration		
8:30 – 10:30	Auditorium D - André Devreker	Session 1 - Advancements in Data Collection, processing, standardization and integration	Auditorium C – Hein Picard	Session 2 - Emerging AI Applications in Precision Live-stock Farming
10:30 – 11:00	Peristilium	Coffee break		
11:00 – 12:30	Auditorium D - André Devreker	Session 1 - Advancements in Data Collection, processing, standardization and integration	Auditorium C – Hein Picard	Session 2 - Emerging AI Applications in Precision Live-stock Farming
12:30 – 13:30	Peristilium	Lunch		
13:30 – 15:30	Auditorium D - André Devreker	Session 3 - Farm and Industry Adoption of AI in Animal Science	Auditorium C – Hein Picard	Session 4 - AI for Science
15:30 – 16:00	Peristilium	Coffee break		
16:00 – 17:30	Auditorium D - André Devreker	Session 3 - Farm and Industry Adoption of AI in Animal Science	Auditorium C – Hein Picard	Session 4 - AI for Science
17:30 – 18:30	Outdoor terraces	Poster session A	Peristilium	Welcome reception
19:30 – 22:00	Social Dinner	SGOL		

30 June 2026		SCIENTIFIC PROGRAM		
TIME	ROOM	ACTIVITY	ROOM	ACTIVITY
9:00 – 10:30	Auditorium D - André Devreker	Plenary session	Auditorium D - André Devreker	
10:30 – 11:00	Peristilium	Coffee break		
11:00 - 12:30	Auditorium D - André Devreker	Plenary session	Auditorium D - André Devreker	
12:30 – 13:30	Peristilium	Lunch		
13:30 – 14:30	Outdoor terra-ces	Poster session B		
14:30 – 16:00	Auditorium D - André Devreker	Session 5 - Data sets and benchmarks	Auditorium C – Hein Picard	Session 6 - Advancing Digital Biomarkers and Phenotypes with AI
16:00 – 16:30	Peristilium	Coffee break		
16:30 – 18:00	Auditorium D - André Devreker	Session 7 - Ethical, environmental and social implications of AI	Auditorium C – Hein Picard	Session 6 - Advancing Digital Biomarkers and Phenotypes with AI
18:00 – 18:15	Auditorium D - André Devreker	Closing and Award ceremony		

1 July 2026 09:00 - 16:00	ILVO Technical Tour	Meeting point: Campus Twekerken Sint-Pietersplein, 9000 Ghent	Location: ILVO T&V115
--------------------------------------	----------------------------	--	--------------------------------------

During this full day technical tour, participants will explore a wide range of ILVO, Ghent university and KU Leuven's innovative research activities across Artificial Intelligence and Precision Livestock applications, but also broadening to topics like digitalization and data sharing, emissions, renewable energy, and advanced Agritech. The tour is organized as a series of demonstrations where experts showcase ongoing projects and technologies. This tour offers a comprehensive overview of multidisciplinary research in Flanders and its practical applications for future-proof agriculture and food systems. It covers the main livestock species and broader agri-food topics. Lunch and transport from Ghent are included and there will be time for networking as well.

- | | |
|---|---|
| <ul style="list-style-type: none"> • AI – computer vision, audio • AI- Large language models, knowledge graphs, foundation models • AI – Federated learning, solid pods • AI – Multimodal applications • AI – infrastructure and practical pipelines • Precision Livestock Farming • Digital twinning in livestock | <ul style="list-style-type: none"> • Value of data in animal nutrition • Animal behavior and animal welfare monitoring • Data sharing and data spaces • Renewable energy for livestock • Showcases of robotics and drone-based applications. |
|---|---|

This intensive 1.5-day summer school introduces participants to computer vision applications and common pitfalls of machine learning in animal science and to, combining lectures, hands-on practical sessions. Participants will learn how to annotate data, train models, deploy them for inference, and critically assess common pitfalls in applying machine learning to real-world animal science problems. A CPU laptop is sufficient, laptop with GPU or remote access to GPU's is preferred.

Day 1 - 2 July 2026 - 09:00 - 18:00 Computer vision applications in animal science

Room: Campus Coupure, building A, room A1.4 (first floor)

Block 1 - Data & Annotation (2.5h)

Lecture:

Participants are introduced to core computer vision tasks relevant to animal science, including image classification, object detection, instance segmentation, oriented bounding boxes (OBB), and pose estimation. Key topics include dataset design, annotation strategies, train/validation/test splits, and evaluation metrics.

Practical:

Hands-on experience labelling datasets using tools such as **CVAT**. Tasks include image classification, object detection, segmentation, OBB, and pose estimation annotations, emphasizing best practices for data quality and consistency.

Block 2 - Model Training & Evaluation (2.5h)

Lecture:

Covers training pipelines, transfer learning, data augmentation, and strategies to avoid overfitting. An overview of models is provided, including ResNet for classification, YOLO for detection/segmentation/OBB, and ViTPose for pose estimation.

Practical:

Participants train models in **Google Colab** for classification (ResNet), detection (Yolo), segmentation (Yolo), and pose (Vitpose) estimation. Sessions include dataset balancing, evaluation of model metrics, and running inference on images and videos to assess performance.

Block 3 - Inference, Deployment & Scaling (2.5h)

Lecture:

Focuses on inference pipelines, deployment environments (PC/NVIDIA, edge devices, HPC), and the trade-offs between speed, accuracy, and computational resources.

Practical:

Participants build **Streamlit** demos and run models on live or recorded video. Conceptual pipelines for edge computing and HPC are explored for long-term or real-time analysis of animal datasets.

Day 2 - 3 July 2026 - 09:00 - 13:00 Pitfalls of Machine Learning in Animal Science

Room: Campus Coupure, building A, room A1.4 (first floor)

Block 4 - Pitfalls of Machine Learning in Animal Science (4h)

Workshop:

This 4-hour hands-on workshop is designed for PhD students and post-docs applying machine learning in animal science, and for industry developers building commercial decision support tools. The format alternates short lectures for context with step-by-step coding notebooks, where participants run and modify code in prepared Jupyter style notebooks (Python and/or R). Using a real annotated sensor stream dataset, we will first train baseline models that intentionally ignore key safeguards, then diagnose what goes wrong, and finally implement fixes and re-evaluate performance.

Pitfalls covered include data leakage, inappropriate cross validation for repeated measurements per animal, overfitting and underfitting, class imbalance, bias, multicollinearity, and time series specific issues such as temporal dependence and split strategy. Participants will learn practical diagnostics (sanity checks, plots, and metric choice), and how to improve robustness without inflating model performance.

Bring your own laptop. Two instructors. Notebook delivered via Google Colab, requiring a browser and a Google account for access to shared notebooks and materials.

Useful information

How to reach Ghent?

From Brussels Airport

By Train: Take a direct train from the airport to Gent-Sint-Pieters Station (runs every ~30 minutes, travel time ~1 hour). From there, continue to the campus by tram, bus, or taxi. For the timetables of the Belgian railway, all organized by the company NMBS, use belgiantrain.be/en.

By car: Use GPS with destination Parking Sint Pietersplein (P10), which is close to the conference venue campus Tweekerken, within walking distance (<2 minutes). Parking in the city center is limited, so consider using nearby public parking garages. Other public parking areas are: Zuid, Kouter, Gent-dampoort, and Centerparking. More options can be found on the Ghent city website stad.gent/en/mobility-ghent/parking-ghent/parking-garages.

How to get around in Ghent and different Ghent University campuses?

By public transport: Public transport in Ghent is organized by De Lijn. Participants can use the De Lijn route planner or app for real-time travel information, for example via delijn.be/en/routeplanner/, especially because roadworks and tram works may affect stops or platforms. The official De Lijn maps for Ghent are available as an actual city map and as a schematic tram network map. Please find useful maps here:

- Actual city map with tram and bus lines (link)
- Schematic tram network map (link)

Tickets: Participants should buy or activate a **valid ticket before boarding**, unless they pay contactless on the vehicle. Tickets can be bought in several ways:

- A simple option for occasional travelers is contactless payment on the bus or tram. Hold a **bank card**, smartphone or smartwatch against the white payment terminal on board. A single trip costs €3, and transfers are included within 60 minutes.
- Tickets can also be bought through the **De Lijn app**, through the **De Lijn website**, by SMS, at a ticket machine, or at a Lijnwinkel (delijn.be/en/storelocator/). **Ticket machines are available at selected stops, but not at every stop** (e.g. available at Gent-Sint-Pieters railway station and Korenmarkt). Tickets can no longer be bought from the driver.
- For an **SMS ticket**, send DL to 4884 before boarding. The ticket is valid for 60 minutes after receiving the confirmation message. For a day ticket by SMS, send DLD to 4884.
- Participants who have a **CityCard Gent** can use all De Lijn trams and buses within the city of Ghent during the validity period of the card. The CityCard does not need to be scanned on public transport, but it must be shown during ticket inspection.
- **Opening hours:** The recommended tram routes below are regular city lines and run frequently during the day. In general, travelers can expect tram services from early morning until late evening e.g. 6:00 until 24:00). However, there is **no single fixed opening hour for the entire network**. First and last departures depend on the line, stop, direction and travel date. Participants should check the De Lijn route planner or app before travelling, especially for evening journeys or in case of route changes.

From Gent-Sint-Pieters station to Campus Tweekerken, Sint-Pietersplein

- For **Campus Tweekerken**, the bus may be more practical than the tram, because there is no equally direct tram stop at Sint-Pietersplein. Travelers who prefer to use public transport can take a bus towards **Sanderusstraat, Heuvelpoort or Sint-Pietersplein**, followed by a short walk to **Campus Tweekerken**. The stop **Sanderusstraat** is served by several lines, including **5a, 5b and 6**.
- A tram-based option is also possible, but it is less direct. Participants can take **tram T1 or T3** from **Gent-Sint-Pietersstation** to **Kouter** or **Gent Zuid**, and then walk to Campus Tweekerken / Sint-Pietersplein.

From Campus Tweekerken to Campus Coupure, Building A

- From **Campus Tweekerken / Sint-Pietersplein**, the clearest public transport route is to walk to Gent Zuid or Kouter, take tram T1 or T3, and get off at **Rozemarijnbrug**. From Rozemarijnbrug, walk along **Coupure Links** to **Campus Coupure, Building A**.
- A second option is to use a **tram T4** route that serves **Theresianenstraat**, then cross the pedestrian bridge over the Coupure canal to reach Building A.
- Bus options can be used if the De Lijn app suggests them, especially around **Sanderusstraat, Heuvelpoort, Zuid, Kouter or Coupure**.

From Gent-Sint-Pieters station to Campus Coupure, Building A

- The recommended route is by **tram T4**. Take tram T4 from **Gent-Sint-Pietersstation** towards **Lange Steenstraat / Muide** and get off at **Theresianenstraat**. From this stop, cross the pedestrian bridge over the Coupure canal to reach **Campus Coupure, Building A**.
- A second tram option is to take **tram T1 or tram T3** from **Gent-Sint-Pietersstation** and get off at **Rozemarijnbrug**. From there, walk along **Coupure Links** to Campus Coupure.
- Bus connections may also be suggested by the De Lijn app.

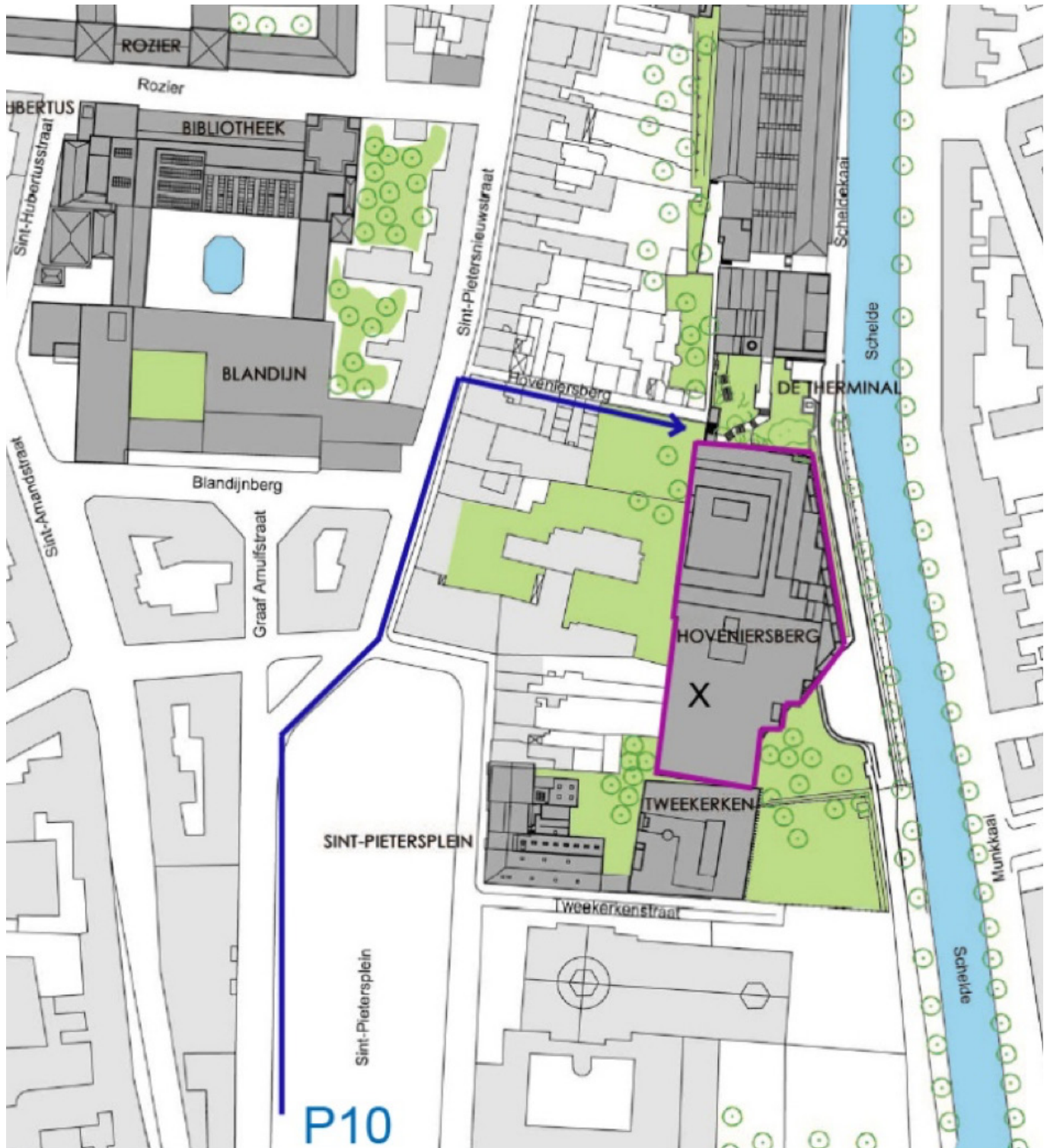
Public tram transport map



Campus Tweekerken

Campus Tweekerken (Ghent University) can be accessed via two entrances, but **AI4AS participants access the conference venue via one entrance:**

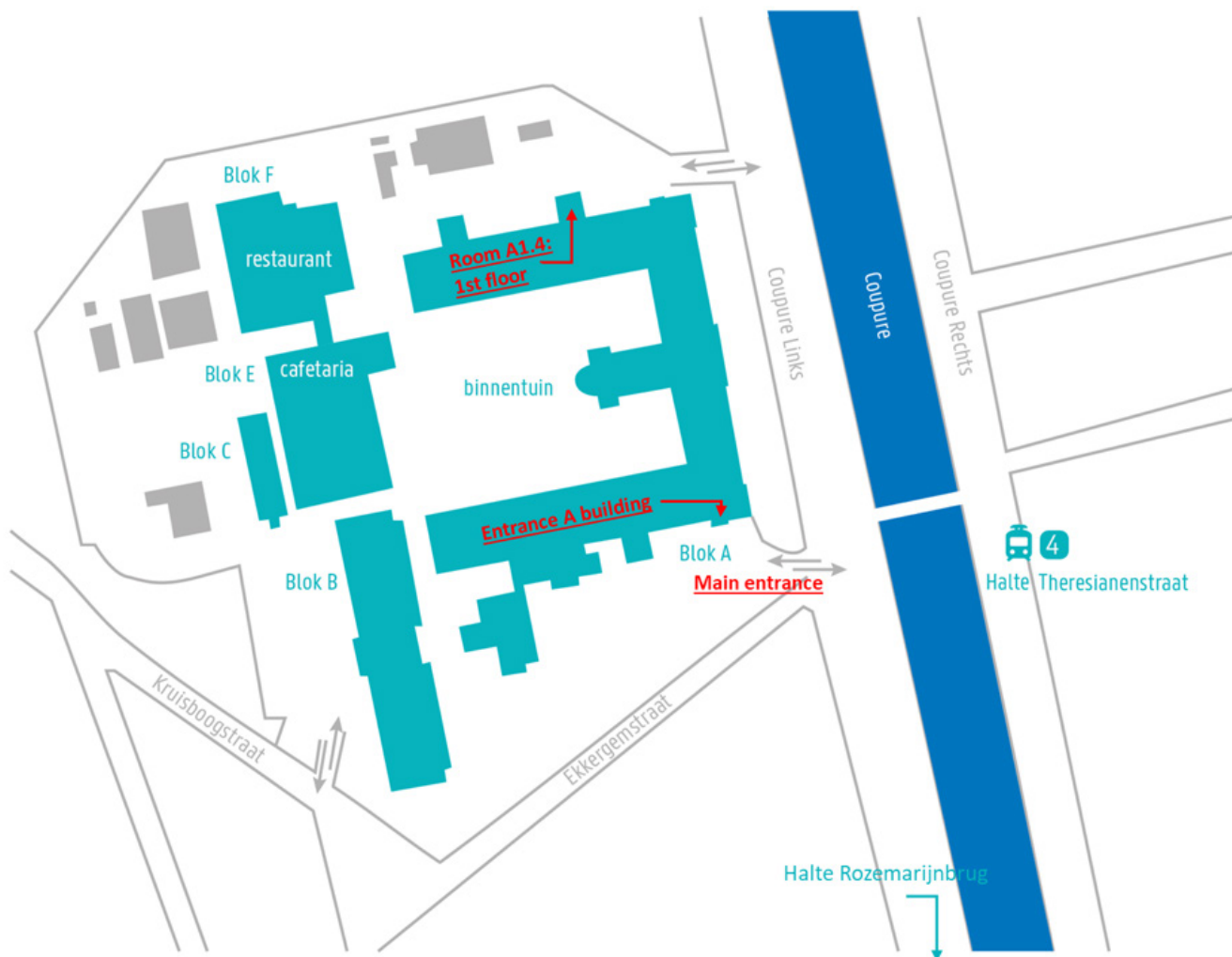
- **Entrance – Hoveniersberg** ([Google Maps](#))
- Adress: Faculty of Economics and Business Administration, Hoveniersberg 24, Ghent
- Access via the Sint-Pietersnieuwstraat
- Pedestrian access only (no car access)
- Direct access to the **Hoveniersberg building**
- Connected internally to the rest of the campus



Campus Coupure

Campus Coupure can be accessed via three entrances, but **AI4AS participants access the campus most easily via the main entrance:**

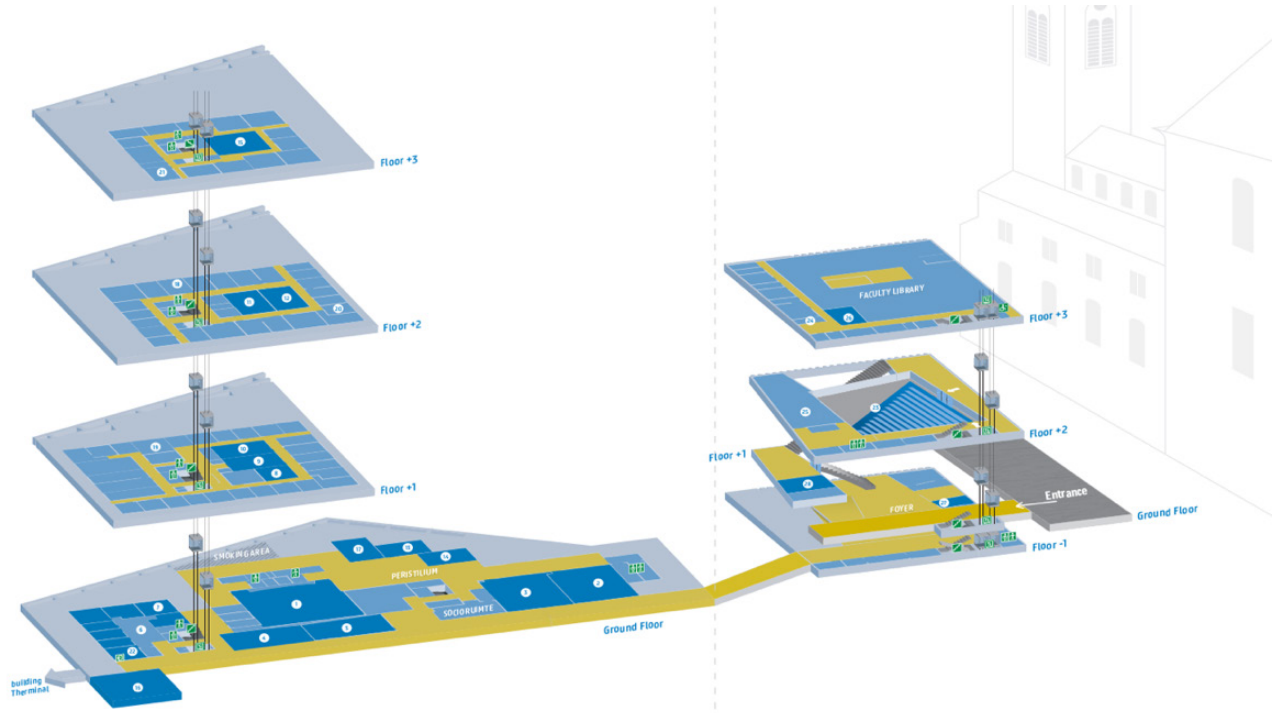
- **Main entrance – Coupure Links** ([Google Maps](#))
- Adress: Faculty of Bioscience Engineering, Coupure links 653, 9000 Ghent
- Access via Coupure links
- Pedestrian access only (no car access)
- Direct access to the **A building**
- Connected to the rest of the campus via outdoor walkways



Groundplan Campus Tweekerken conference 29-30 June 2026

The scientific presentations will be held at **Auditorium D - André Devreker (number 1)** and **Auditorium C – Hein Picard (number 3)**.

The groundplan of the Campus can also be found here: <https://www.ugent.be/eb/en/contact/map-campus/campuses/map-campus-tweekerken-3d.pdf>



Hoveniersberg

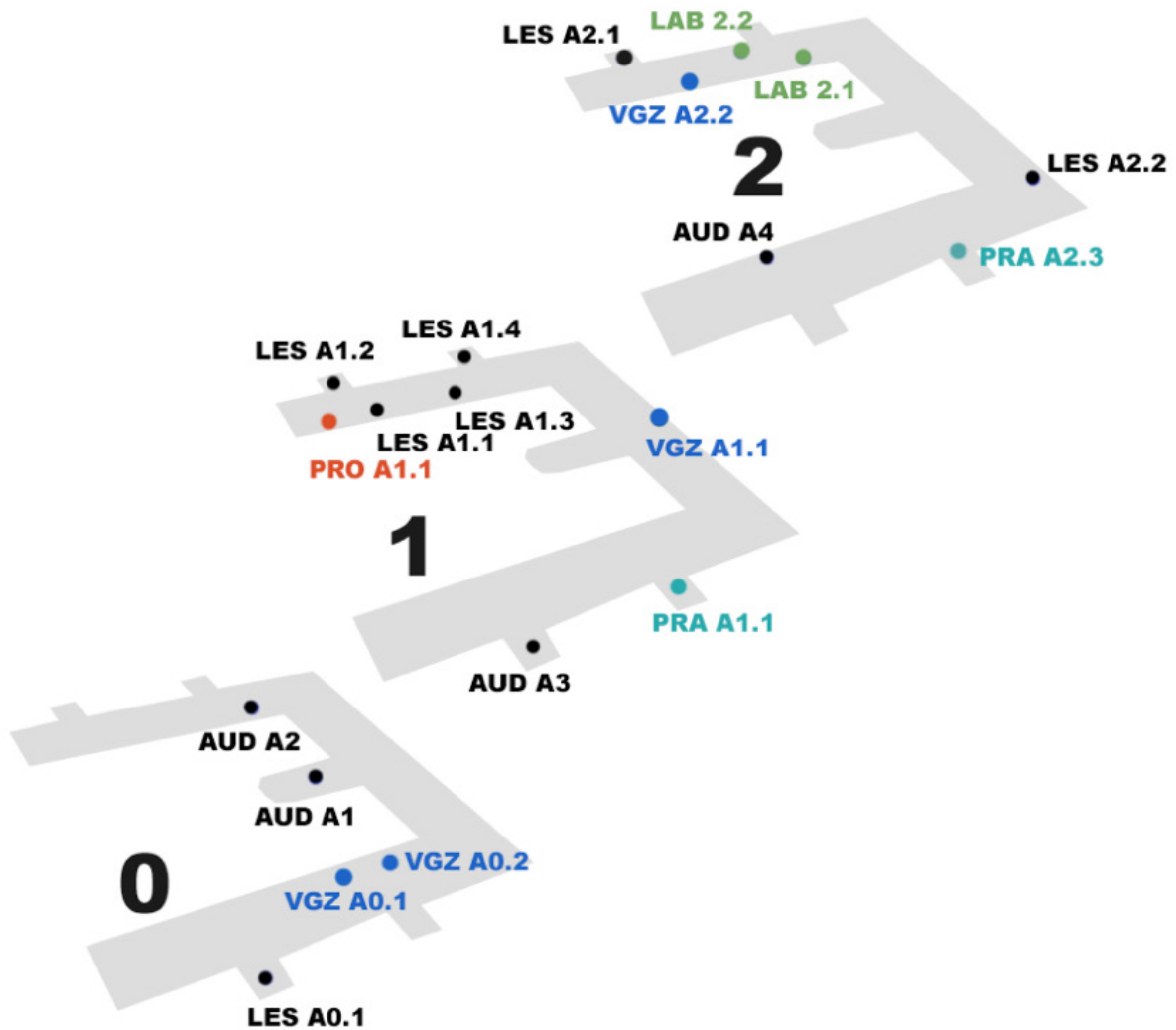
- | | | | |
|---|----------------------------------|--|---|
| 1 Auditorium André Devreker | 7 International Relations Office | 15 Classroom 01 Lucien De Smet | 18 Secretariat Department of Business Informatics and Operations Management |
| 2 Auditorium André Klerck | 8 Classroom 1.2 | 16 Classroom 02 Camiel De Preulenaeker | 19 Secretariat Department of Economics |
| 3 Auditorium Hein Picard | 9 Classroom 1.3 Fernand Rogers | 17 PC-room 01 (HDV) | 20 Secretariat Department of Marketing, Innovation and Organisation |
| 4 Auditorium Julien Dreysser | 10 Classroom 1.4 | 18 PC-room 02 | 21 Secretariat Department of Marketing, Innovation and Organisation |
| 5 Auditorium Maurice Van Veenbergh | 11 Classroom 2.1 | | 22 Internship Coordination |
| 6 Faculty Student Administration and Student Learning Service | 12 Classroom 2.2 | | |

Tweekerken

- | |
|--------------------------|
| 23 Auditorium Quastet |
| 24 Dean's Office |
| 25 Faculty Boardroom |
| 26 Meeting room Decaamat |
| 27 Meeting room K&D |
| 28 Meeting room Quastet |

Ground plan building A campus Coupure

The summer school workshop will be organized at **room A1.4 (LES A1.4 on the image above)**.
The ground plan of the Campus can also be found here: ugent.be/bw/nl/contact/leslokalen-a.htm



Campus Coupure Blok A

How to reach the dinner venue

SGOL is a grand café and restaurant located in the **historic city centre of Ghent**, close to the Belfry, Saint Bavo's Cathedral and Saint Nicholas' Church. The restaurant is situated underneath the Stadshal, the modern City Pavilion on Emile Braunplein. This striking open pavilion was designed by Robbrecht & Daem / Marie-José Van Hee and is known locally by its nickname "de Schapenstal". Participants will be able to choose between two menu options: a vegan menu or a standard menu.

Address: Emile Braunplein 40, Ghent

Website: sgol.be



Language

The official language of the conference is English. In Belgium, there are two official languages: Flemish and French, but English is widely spoken, especially in academic and professional settings.

Passport and Visa

Belgium is part of the **Schengen Area**, allowing EU citizens to travel without a visa. Additionally, nationals from several non-EU countries, including the United States, UK and Canada, can enter visa-free for up to 90 days. For specific visa requirements, please consult the <https://www.schengenvisainfo.com/>

Official Invitation and Certification

Participants can request an **official invitation letter** to assist with Visa requirements to riccardo@eaap.org. The invitation does not impose any financial obligations on the organizing committee. **A certificate of attendance** will be provided for all registered participants.

Liability and Insurance

The organizing committee is not responsible for personal accidents, lost or damaged property. Participants are encouraged to arrange their own **travel and health insurance** before arriving in Ghent.

Health and Emergency

In case of an emergency, dial 112 (European emergency number) for immediate assistance. Ghent also offers 24/7 medical services at hospitals and clinics throughout the city.

Currency

The official currency in Belgium is the Euro (EUR). Most major credit and debit cards are accepted, and ATMs are widely available. Currency exchange services can be found at airports, train stations, and banks.

Local Time Zone

Ghent operates on **Central European Time (CET, UTC/GMT +1)** and follows **Daylight Saving Time (CEST, UTC/GMT +2)** from late March to late October.

Climate

Ghent in June and July offers mild to warm, generally pleasant weather, with daily highs typically ranging from 21°C to 23°C and lows around 11°C to 14°C. July is slightly warmer and considered one of the best times to visit, though rain is common, requiring layered clothing and umbrellas, as weather conditions can vary.

Electricity

Belgium uses **Type E electrical sockets** with a **standard voltage of 230V** and a **frequency of 50Hz**. Travelers from countries using different plug types should bring an adapter.

Information for participants

Registration Desk

The registration desk will be located on the ground floor, near outdoor terraces and will open on Monday 29 June 2026 from 8 a.m.

To Authors

Authors who do not wish to have their PDF presentations or posters made available on the EAAP website must notify EAAP by June 1, 2026. This can be done by sending an email to riccardo@eaap.org. After this date, EAAP will assume permission to include the presentation/poster on the website.

Posters

Poster sessions will be organized both on 29 and 30 June 2026. Posters should be in portrait format and A0 size (841 x 1189 mm).

All participants are kindly requested to bring their printed poster with them in advance. Posters should be printed in A0 format before arriving at the conference.

A dedicated support team will be available on site to assist participants with poster-related questions and logistics, if needed.

ILVO will provide a back-up option for poster printing. The cost is €27 for an A0 poster. The final deadline for submission is 8 June 2026.

This can be done by sending an email to shanida.mullatahiri@ilvo.vlaanderen.be

Theatre Presentation Upload Desk

The upload desk for theatre presentations will be available at the registration desk from Monday morning. The support team will assist participants with the upload process. Please ensure that your presentation is on a portable USB drive. Meeting rooms will be equipped with MS Windows computers, so PowerPoint presentations (*.ppt; *.pptx) are preferred. Each theatre presentation is allotted 12 minutes, plus 3 minutes for questions.

Coffee breaks

Coffee breaks will take place in Peristilium and outside terraces.

Lunches

Lunches will take place in Peristilium.

Social dinner

Social dinner will take place at [SGOL](#) (approximately 30 minutes walking distance from Campus Tweekerken).

Technical tour

Technical tour will take place at ILVO T&V115, Technology and Food Science Unit, Agricultural Engineering.

Adress: Burg. van Gansberghelaan 115 bus 1, 9820 Merelbeke-Melle, Belgium.

Participants will arrive by bus at ILVO T&V115. The program will run from 10:00 to 16:00.

During the day, participants will be divided into four subgroups. Each group will be guided by members of the ILVO team and will rotate through a series of short demonstrations.

The program includes a keynote by ILVO on Large Language Models (LLMs), Foundation Models (FMs), and Knowledge Graphs (KGs).

The morning program consists of a mix of short demonstrations and rotations, focusing primarily on AI applications in livestock farming, complemented by additional demonstrations providing a broader overview.

Participants will gain insights into innovative research activities at ILVO (Technology and Food Science Unit and Animal Science Unit), as well as work from Ghent University and KU Leuven. The focus will be on artificial intelligence and Precision Livestock Farming (PLF), alongside related topics such as digitalization and data sharing, emissions, renewable energy, and advanced agritech.

The program will conclude at 16:00, after which participants will return by bus.

Summer School Day 1:

The first day of the Summer School will take place at room A1.4 (building A, 1st floor, campus Coupure) and will be focused on Computer vision applications in animal science.

Summer School Day 2:

The second day of the Summer School will take place at room A1.4 (building A, 1st floor, campus Coupure) and will be focused on Pitfalls of Machine Learning in Animal Science.

Conference Website

The Artificial Intelligence 4 Animal Science website is live and optimized for smartphone navigation. It contains detailed information about the conference program and venue. You can visit the conference website at the following link: <https://ai4as.eaap.org/>.

Conference App

The conference program will be available for all delegates by downloading the app "EAAP" available for iOS/Android.

